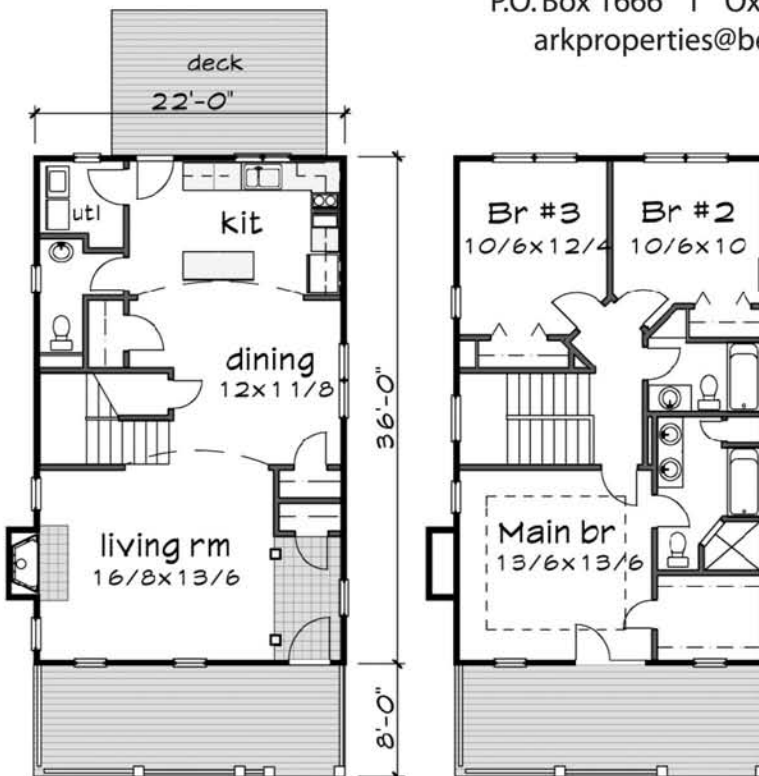


Audubon Park

oxford, mississippi



PLAN: Lark's Run | Developed by: Kimbrell-Crowson, LLC
P.O. Box 1666 | Oxford, MS 38655
arkproperties@bellsouth.net



Total Living Space - 2,107 sq ft

Porches/Deck - 492
Total Heated/Cooled Sq. Ft - 1,615
Downstairs - 840
Upstairs - 775

©Rick Thompson, Architect

Audubon Park | Oxford, MS
www.arkproperties.net